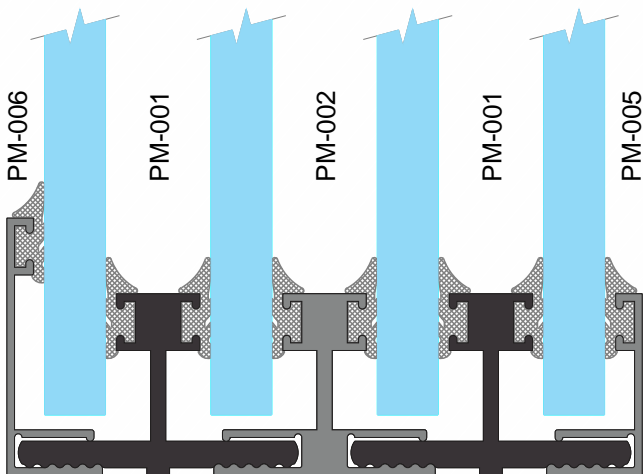


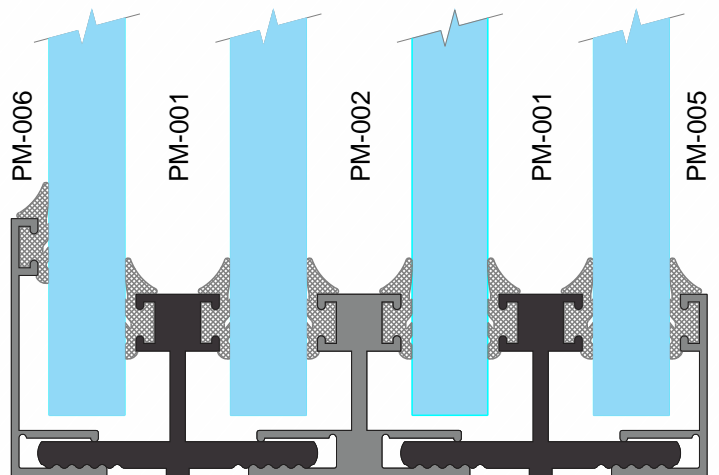
PERFIS MÚLTIPLOS

Catálogo Técnico

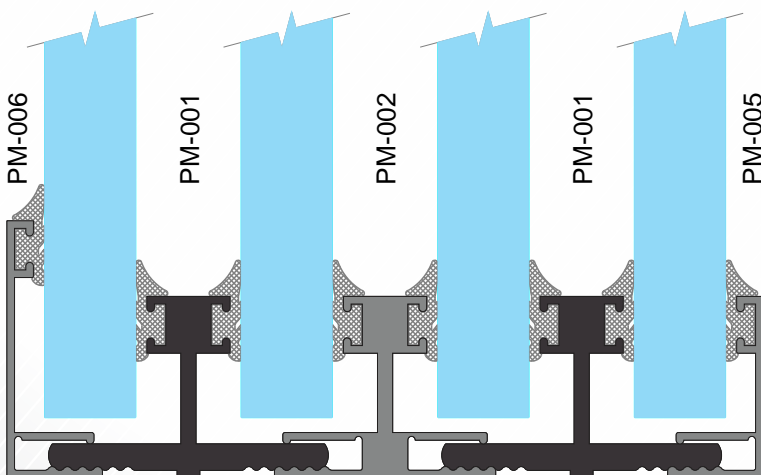
PERFIS MÚLTIPLOS VIDROS 8mm

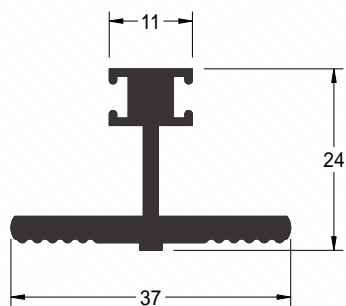


PERFIS MÚLTIPLOS VIDROS 10mm



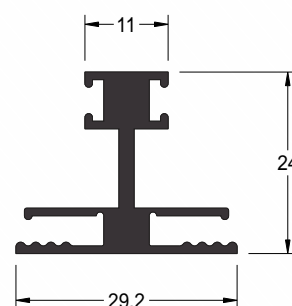
PERFIS MÚLTIPLOS VIDROS 12mm





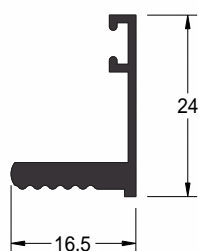
PM-001 Encaixe Macho Duplo

Peso (Kg/m)	Superfície (mm ² /mm)		Inércia (mm ² /mm)	
	Área	Perímetro	Jx mm ⁴	Jy mm ⁴
0,562	208.13	157.23	13061.42	13790.11



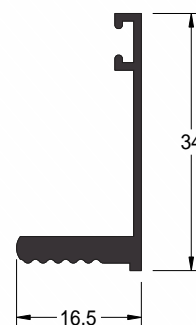
PM-002 Encaixe Macho Fêmea

Peso (Kg/m)	Superfície (mm ² /mm)		Inércia (mm ² /mm)	
	Área	Perímetro	Jx mm ⁴	Jy mm ⁴
0,442	163.78	187.24	11423.84	4826.67



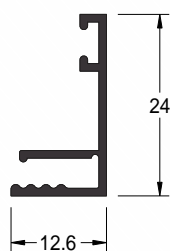
PM-003 Encaixe Simples Macho

Peso (Kg/m)	Superfície (mm ² /mm)		Inércia (mm ² /mm)	
	Área	Perímetro	Jx mm ⁴	Jy mm ⁴
0,222	82.06	94.61	3952.81	2153.16



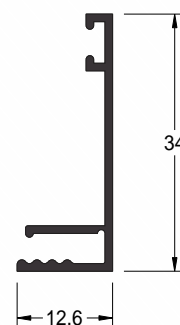
PM-004 Encaixe Simples Macho

Peso (Kg/m)	Superfície (mm ² /mm)		Inércia (mm ² /mm)	
	Área	Perímetro	Jx mm ⁴	Jy mm ⁴
0,249	92.13	114.60	10483.82	2390.82



PM-005 Encaixe Simples Fêmea

Peso (Kg/m)	Superfície (mm ² /mm)		Inércia (mm ² /mm)	
	Área	Perímetro	Jx mm ⁴	Jy mm ⁴
0,148	54.88	109.62	3382.51	751.53



PM-006 Encaixe Simples Fêmea

Peso (Kg/m)	Superfície (mm ² /mm)		Inércia (mm ² /mm)	
	Área	Perímetro	Jx mm ⁴	Jy mm ⁴
0,175	64.88	129.62	8589.48	830.89

